

DESCRIPTION:

PT62 float and thermostatic (internal air vent) steam traps are designed for draining condensate from all types of low and medium pressure steam heating and process equipment.

Typical applications include unit heaters, heat exchangers, driers and jacketed vessels.

Horizontal installation.

AVAILABLE TYPES:

PT 62 - with thermostatic air vent

PT 62S- SLR (with steam lock release)

PT 62C - with thermostatic air vent and SLR.

FEATURES:

Modulating discharge.

Discharges condensate at steam temperature.

Excellent air venting (by thermostatic air vent).

USE: Saturated and superheated steam.

SIZES: NPS 1½, 2 (DN40, 50)

CONNECTIONS: Screwed (NPT/BSPT/BSP)
Flanged / Socket weld

Non IBR¹ / IBR

LIMITING CONDITIONS:

PMA: Max allowable pressure	225 psig	16 kg/cm ² (g)
TMA: Max. allowable temperature	425 °F	220 °C
PMO: Max. operating pressure	200 psig	14 kg/cm ² (g)
TMO: Max. operating temperature	425 °F	220 °C
Body shell design rating	285 psig 800 °F	20 kg/cm ² (g) 426 °C
Cold hydro test pressure	450 psig	32 kg/cm ² (g)


INSTALLATION:

Horizontal installation with flow from left to right.

The trap should be installed horizontally below the drain point of the equipment in a position such that the float arm is in a horizontal plane and the float rises and falls vertically, with the flow direction as indicated on the cover.

The arrow on the nameplate should be pointing vertically upwards.

Max. differential pressure range:

PT62-65 : 65 psi (4.5 kg/cm²)

PT62-145 : 145 psi (10 kg/cm²)

PT62-200 : 200 psi (14 kg/cm²)

TRAP DISCHARGE CAPACITY IN lbs/hr

MODEL	SIZE	DIFFERENTIAL PRESSURE (psi)																
		7	15	21.5	28.5	42.5	57	65	70	85	100	115	128	145	157	170	185	200
PT62-65	1.½", 2"	6655	7205	7755	8340	9460	10560	11135	-----	-----	-----	-----	-----	-----	-----	-----	-----	-----
PT62-145	1.½", 2"	4920	5910	6270	6430	6820	7350	7525	7765	8150	8875	9700	10550	11275	-----	-----	-----	-----
PT62-200	1.½", 2"	4280	4995	5590	6115	6545	6820	6995	7160	7415	7975	8560	9085	9615	10100	10560	11000	11430

Recommended safety factor: steady condns. 1.5 - 2; fluctuating condns. 2-3

TRAP DISCHARGE CAPACITY IN kg/hr

MODEL	SIZE	DIFFERENTIAL PRESSURE (kg/cm ²)																
		0.5	1	1.5	2	3	4	4.5	5	6	7	8	9	10	11	12	13	14
PT62-4.5	DN40,50	3022	3272	3521	3787	4295	4795	5056	-----	-----	-----	-----	-----	-----	-----	-----	-----	-----
PT62-10	DN40,50	2234	2684	2847	2920	3097	3337	3417	3526	3700	4030	4404	4790	5119	-----	-----	-----	-----
PT62-14	DN40,50	1944	2268	2538	2777	2972	3097	3176	3251	3367	3221	3887	4125	4366	4586	4795	4994	5190

Recommended safety factor: steady condns. 1.5 - 2; fluctuating condns. 2-3

¹Indian Boiler Regulations

MATERIAL:

NO.	PART	MATERIAL	QTY.(Nos.)
1.	BODY	ASTM A216 Gr. WCB	01
2.	COVER	ASTM A216 Gr. WCB	01
3.	GASKET	CAF / Non CAF	01
4.	VALVE SEAT	13% CR STEEL / AISI 410/420	01
5.	BALL FLOAT & LEVER ASSY.	AISI 304	01
6.	AIR VENT	STAINLESS STEEL	01
7.	BOLT	ASTM 193 Gr. B7	06
8.	DRAIN PLUG	CARBON STEEL	01
9.	BRACKET ASSY.	AISI 304	01
10.	SLR UNIT	AISI 304	01

WEIGHT

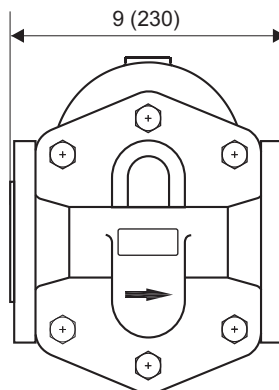
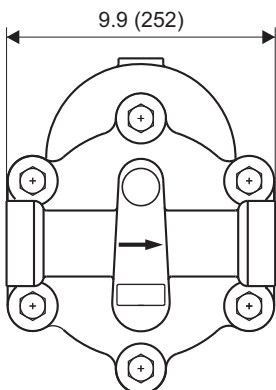
Screwed/SW		Flanged	
68 lbs	31 kg	77 lbs	35 kg

AVAILABLE SPARES:

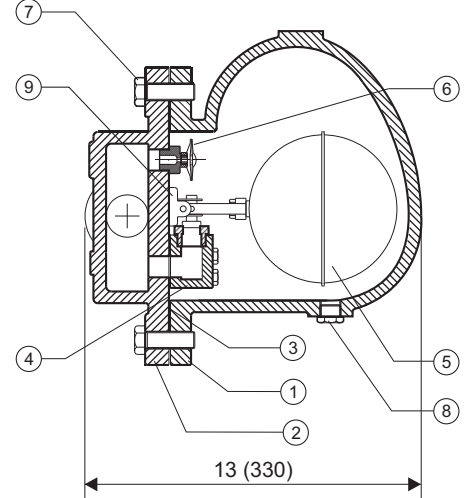
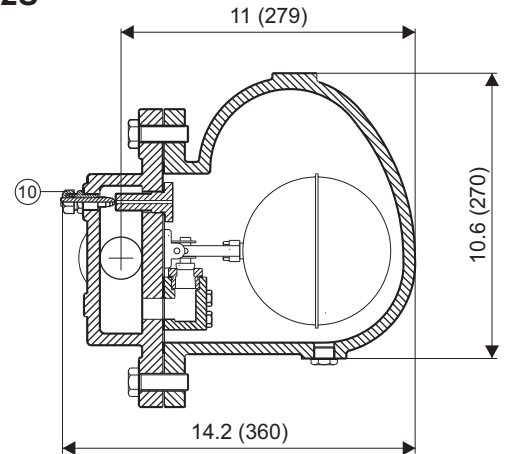
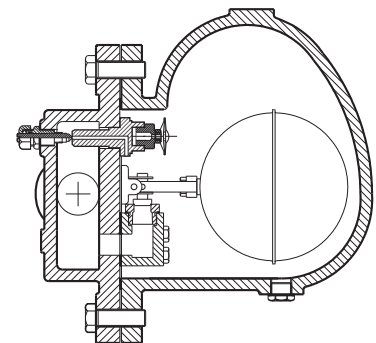
Valve Seat, Ball Float & Lever Assy., Air Vent, Gaskets.

ORDERING INFORMATION:

Refer to "HOW TO ORDER" page.



DIMENSIONS - Nominal in inches (mm)

PT62

PT62S

PT62C


Local regulations may restrict the use of this product below the conditions quoted. Limiting conditions refer to standard connections only. In the interest of development and improvement of the product, we reserve the right to change the specifications without prior notice.